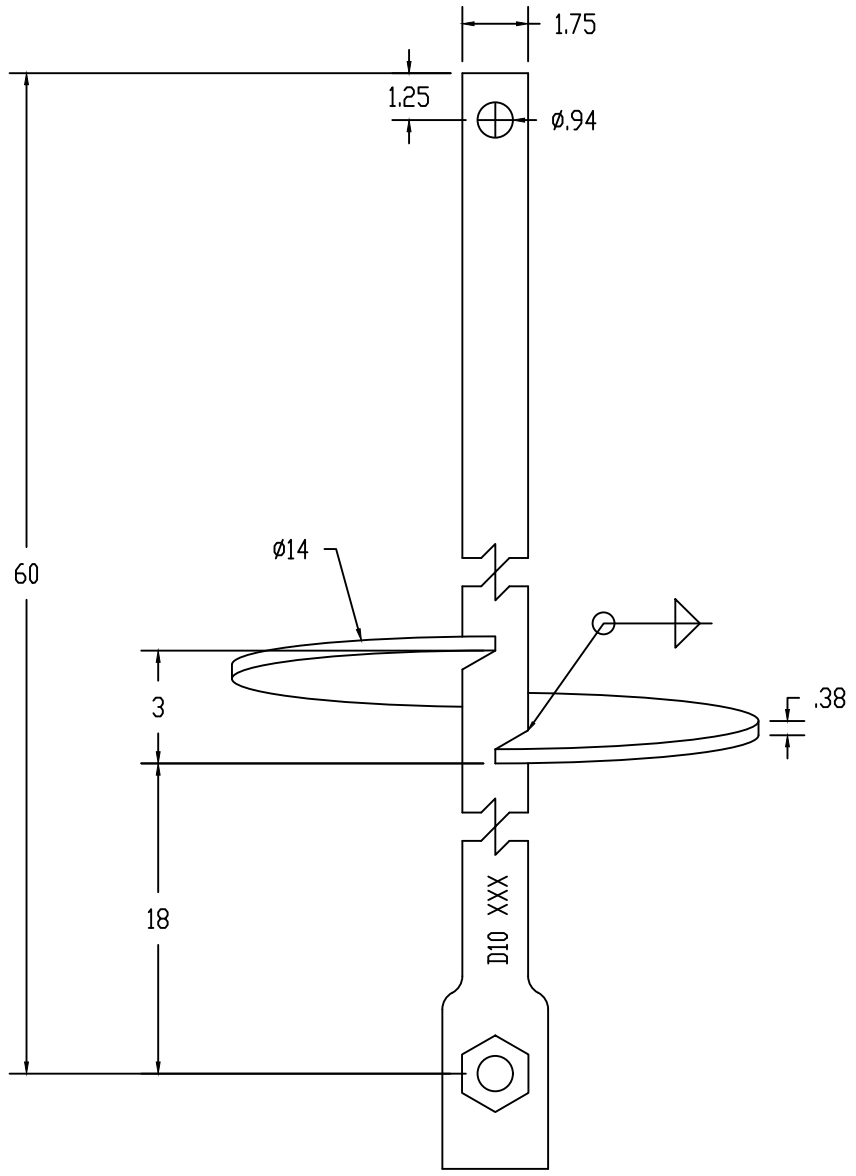


ISS	REVISED BY:	REVISION DATE	ECO #



NOTES:

MATERIAL:  
RCS - SHAFT STEEL, 90 KSI YIELD  
HELIX - STEEL, 55 KSI YIELD

WELDING REQUIREMENTS:  
ALL WELDING TO BE PERFORMED BY WELDERS CERTIFIED UNDER SECTION 5 OF AWS D1.1

FINISH:  
HOT DIP GALVANIZED PER ASTM A123  
HOT DIP GALVANIZED PER ASTM A153 (HDW)

DIMENSIONS: INCHES

REQUIREMENTS:  
METAL MUST BE MELTED AND ALL PROCESSING PERFORMED IN THE USA. MUST INCLUDE CERTIFICATE THAT THE PART MEETS FHWA 'BUY AMERICA' REQUIREMENTS.

HARDWARE:  
HEX HEAD BOLT, 7/8 $\phi$  PER ASTM A325 (1 EA)  
HEX JAM NUT, 7/8  $\phi$  PER ASTM A563 (1 EA)

MECHANICAL RATING:  
TORQUE - 10,400 FT-LBS  
K $\dagger$  FACTOR - 10  
ULTIMATE AXIAL CAPACITY - 100.5 KIPS

This drawing contains confidential information that is the property of MacLean Power, L.L.C. ("MacLean"). Use of MacLean's confidential information without MacLean's express written consent is strictly prohibited and may expose you to legal liability. If you believe that you received this material in error, please destroy it or return it to MacLean Power, L.L.C., Kingsley Park Five, 481 Munn Rd. Suite 300, Fort Mill, SC 29715, USA.



WWW.MACLEANPOWER.COM

CATALOG NUMBER: D2801-0011-US		
SHEET NAME: Sheet1	1 OF 1	
DRAWING DESCRIPTION: RCS LEAD D10, W/ HELIX, BUY AMERICA 1-3/4" X 60"		
DRAWN BY: DH	DATE: 08/10/20	APPROVED: DR