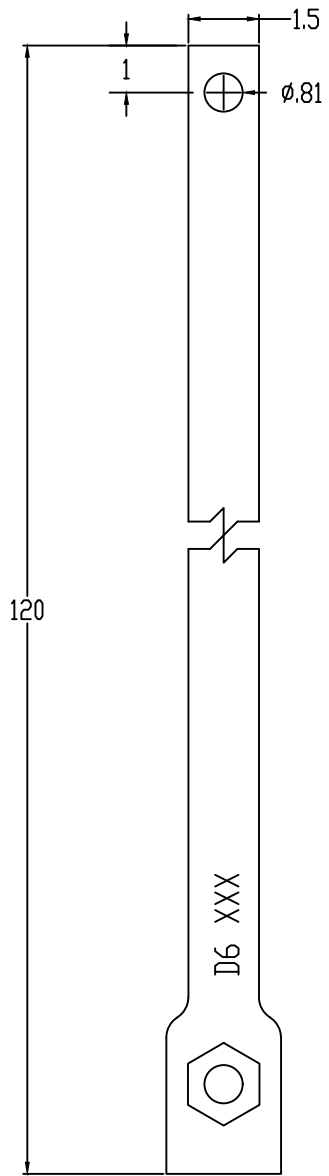


ISS	REVISED BY:	REVISION DATE	ECD #



NOTES:

MATERIAL:
RCS SHAFT; STEEL, 70 KSI YIELD

FINISH:
HOT DIP GALVANIZED PER ASTM A123
HOT DIP GALVANIZED PER ASTM A153 (HDW)

DIMENSIONS: INCHES

HARDWARE:
HEX HEAD BOLT, 3/4 ϕ PER ASTM A325 (1 EA)
HEX JAM NUT, 3/4 ϕ PER ASTM A563 (1 EA)

REQUIREMENTS:
METAL MUST BE MELTED AND ALL PROCESSING PERFORMED
IN THE USA. MUST INCLUDE CERTIFICATE THAT THE PART
MEETS FHWA 'BUY AMERICA' REQUIREMENTS.

MECHANICAL RATING:
ULTIMATE INSTALLATION TORQUE - 5,500 FT-LBS
K \dagger FACTOR - 10
ULTIMATE AXIAL CAPACITY - 68 KIPS

This drawing contains confidential information that is the property of MacLean Power, L.L.C. ("MacLean"). Use of MacLean's confidential information without MacLean's express written consent is strictly prohibited and may expose you to legal liability. If you believe that you received this material in error, please destroy it or return it to MacLean Power, L.L.C., Kingsley Park Five, 481 Munn Rd. Suite 300, Fort Mill, SC 29715, USA.



WWW.MACLEANPOWER.COM

CATALOG NUMBER: D6630U-US		
SHEET NAME: Sheet1	1 OF 1	
DRAWING DESCRIPTION: EXTENSION BAR D6, BUY AMERICA 1-1/2" X 120"		
DRAWN BY: DH	DATE: 08/07/20	APPROVED: DR