

NOTES:

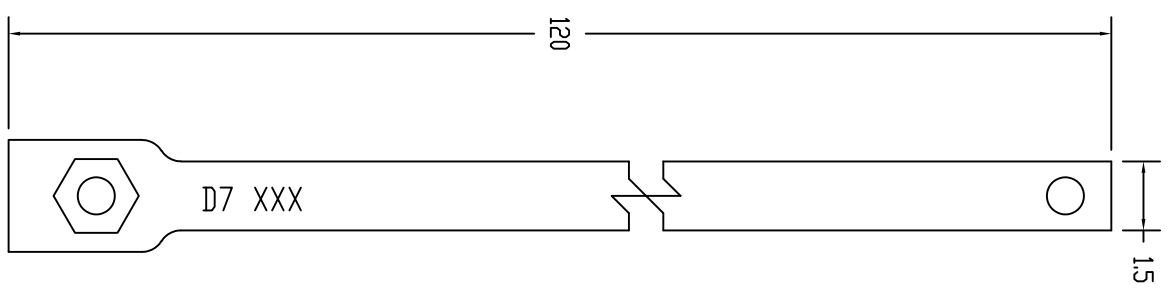
MATERIAL:  
RCS - SHAFT STEEL, 90 KSI YIELD

FINISH:  
HOT DIP GALVANIZED PER ASTM A123  
HOT DIP GALVANIZED PER ASTM A153 (HDW)

DIMENSIONS: INCHES

HARDWARE:  
HEX HEAD BOLT, 3/4" PER ASTM A325 (1 EA)  
HEX JAM NUT, 3/4" PER ASTM A563 (1 EA)

MECHANICAL RATING:  
TORQUE - 7,000 FT-LBS  
K<sub>t</sub> FACTOR - 10  
ULTIMATE MECHANICAL SHAFT CAPACITY FOR AXIAL  
LOADING - 70 KIPS



This drawing contains Confidential Information that is the Property of MacLean Power, LLC. (MacLean). Use of MacLean's Confidential Information without MacLean's express written consent is strictly prohibited and may expose you to legal liability. If you believe that you received this material in error, please destroy it or return it to MacLean Power, LLC, Kingsley Park Five, 481 Munn Rd, Suite 300, Fort Mill, SC 29715, USA.

**MacLean**  
POWER SYSTEMS  
WWW.MACLEANPOWER.COM

CATALOG NUMBER:		D6630U7	
SHEET NAME:	Sheet 1	1 OF	1
DRAWING DESCRIPTION:	EXTENSION BAR D7 1-1/2" X 120"		
DRAWN BY:	DH	DATE:	05/06/20
APPROVED:	DR		