

ISS	REVISED BY:	REVISION DATE	ECO #
0	DH	03/29/21	A10180

NOTES:

ICC-ES EVALUATION REPORT ESR-3032 ACCREDITED PRODUCT

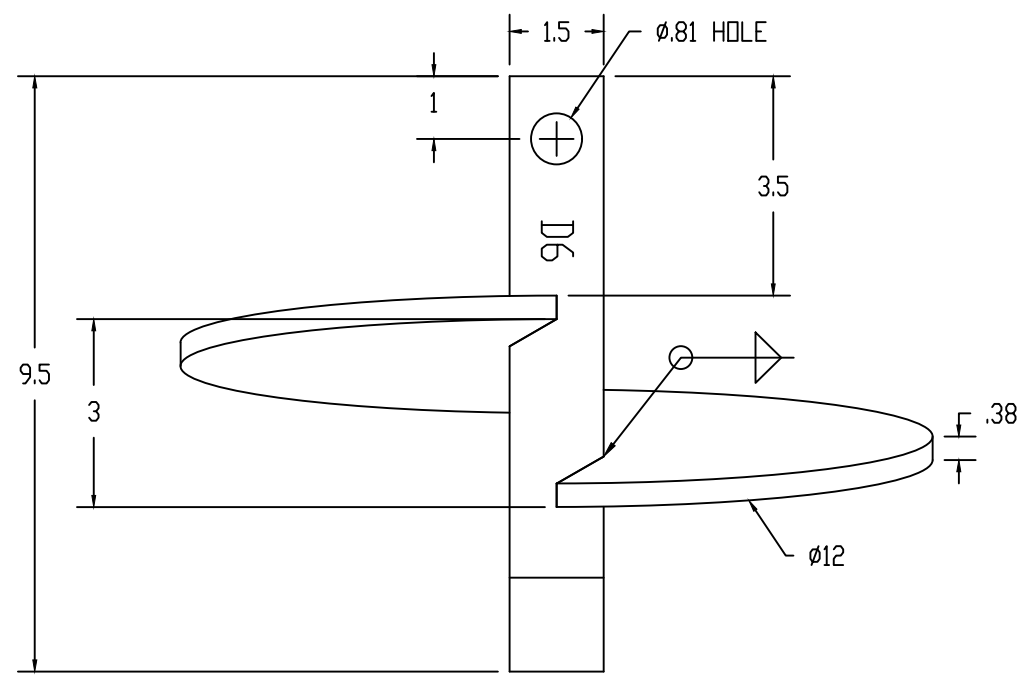
MATERIAL:
 HELIX - STEEL, 55 KSI YIELD
 RCS - SHAFT STEEL, 70 KSI YIELD

WELDING REQUIREMENTS:
 ALL WELDING TO BE PERFORMED BY WELDERS CERTIFIED
 UNDER SECTION 5 OF AWS D1.1

FINISH:
 HOT DIP GALVANIZED PER ASTM A123

DIMENSIONS: INCHES

MECHANICAL RATING:
 TORQUE - 5,500 FT-LBS
 Kt FACTOR - 10
 ULTIMATE AXIAL CAPACITY - 68 KIPS



CATALOG NUMBER: D69.5S12		
SHEET NAME: Sheet1	1 OF 1	
DRAWING DESCRIPTION: RCS LEAD D6, W/ HELIX 1-1/2" X 9-1/2"		
DRAWN BY: DH	DATE: 03/29/21	APPROVED: BAB



WWW.MACLEANPOWER.COM

This drawing contains confidential information that is the property of MacLean Power, L.L.C. ("MacLean"). Use of MacLean's confidential information without MacLean's express written consent is strictly prohibited and may expose you to legal liability. If you believe that you received this material in error, please destroy it or return it to MacLean Power, L.L.C., Kingsley Park Five, 481 Munn Rd. Suite 300, Fort Mill, SC 29715, USA.