

ISS	REVISED BY:	REVISION DATE	ECD #

NOTES:

MATERIAL:

PLATE - STEEL, 36 KSI YIELD

COUPLER - STEEL, 40 KSI YIELD

PIPE - SHAFT STEEL, 50 KSI YIELD

WELDING REQUIREMENTS:

ALL WELDING TO BE PERFORMED BY WELDERS CERTIFIED UNDER SECTION 5 OF AWS D1.1

FINISH:

PAINT, DARK GREEN

HOT DIP GALVANIZED PER ASTM A153 (HDW)

DIMENSIONS: INCHES

HARDWARE:

HEX HEAD BOLT, 1/2" PER ASTM A325 (6 EA)

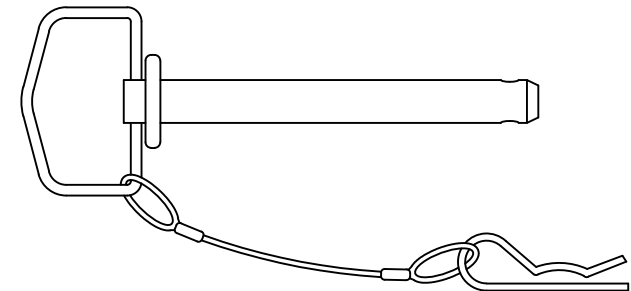
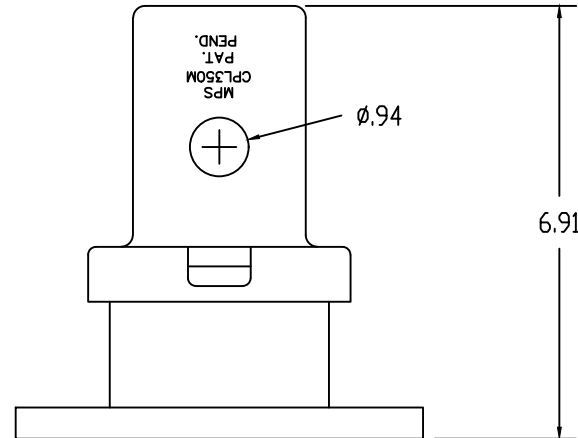
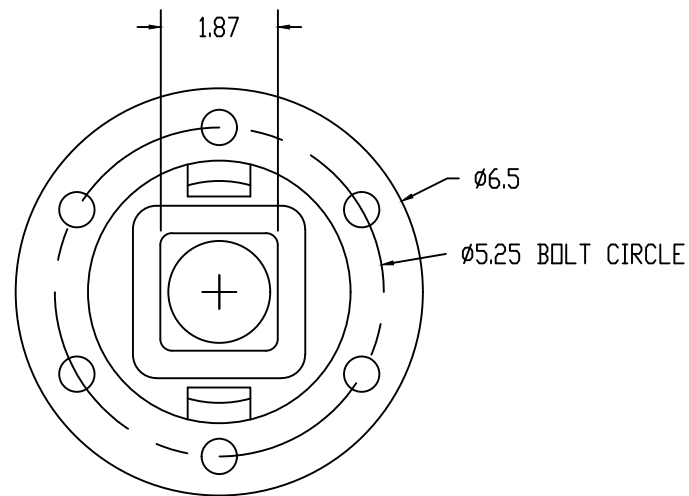
HEX JAM NUT, 1/2" PER ASTM A563 (6 EA)

LOCK WASHER, 1/2" PER AISI C-1090 (6 EA)

D-RING PIN W/ CP (1 EA)

MECHANICAL RATING:

TORQUE - 10,000 FT-LBS



CATALOG NUMBER:

IT35-525

SHEET NAME:

Sheet1

1 OF 1

DRAWING DESCRIPTION:

DRIVE TOOL FOR
3.5" O.D. PIPE & 1-3/4" RCS
7-5/8" BOLT CIRCLE

DRAWN BY:

DH

DATE:

03/12/20

APPROVED:

DR

 **MacLean**
POWER SYSTEMS

WWW.MACLEANPOWER.COM

This drawing contains confidential information that is the property of MacLean Power, L.L.C. ("MacLean"). Use of MacLean's confidential information without MacLean's express written consent is strictly prohibited and may expose you to legal liability. If you believe that you received this material in error, please destroy it or return it to MacLean Power, L.L.C., Kingsley Park Five, 481 Munn Rd. Suite 300, Fort Mill, SC 29715, USA.