

ISS	REVISED BY:	REVISION DATE	ECD #

NOTES:

MATERIAL:
 PLATE - STEEL, 36 KSI YIELD
 COUPLER - STEEL, 40 KSI YIELD

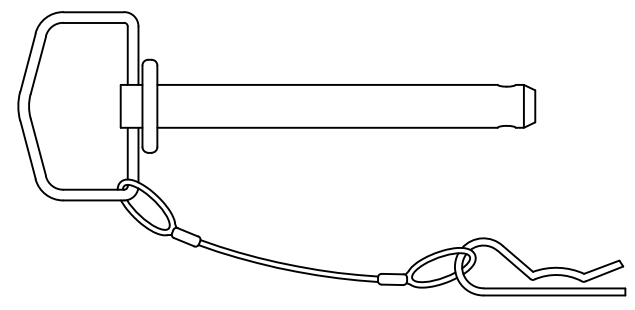
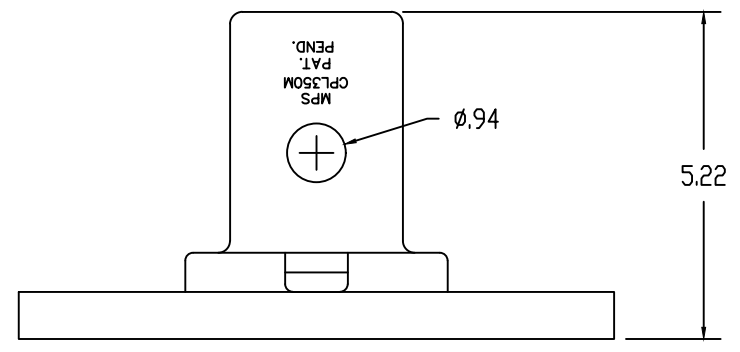
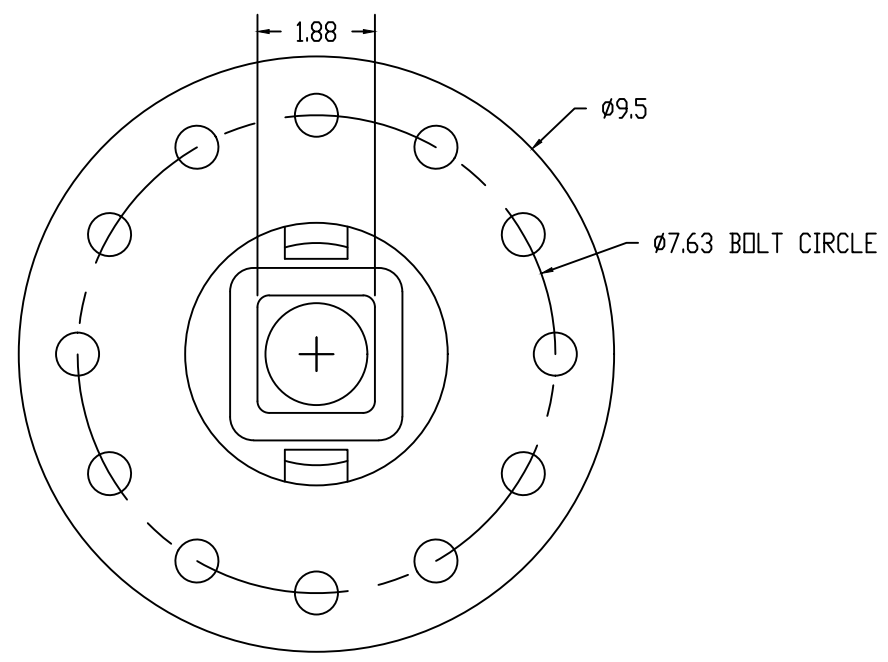
WELDING REQUIREMENTS:
 ALL WELDING TO BE PERFORMED BY WELDERS CERTIFIED UNDER SECTION 5 OF AWS D1.1

FINISH:
 PAINT, DARK GREEN
 HOT DIP GALVANIZED PER ASTM A153 (HDW)

DIMENSIONS: INCHES

HARDWARE:
 HEX HEAD BOLT, 5/8 ϕ PER ASTM A325 (12 EA)
 HEX JAM NUT, 5/8 ϕ PER ASTM A563 (12 EA)
 LOCK WASHER, 5/8 ϕ PER AISI C-1090 (12 EA)
 D-RING PIN W/ CP (1 EA)

MECHANICAL RATING:
 TORQUE - 20,000 FT-LBS



This drawing contains confidential information that is the property of MacLean Power, L.L.C. ("MacLean"). Use of MacLean's confidential information without MacLean's express written consent is strictly prohibited and may expose you to legal liability. If you believe that you received this material in error, please destroy it or return it to MacLean Power, L.L.C., Kingsley Park Five, 481 Munn Rd. Suite 300, Fort Mill, SC 29715, USA.



WWW.MACLEANPOWER.COM

CATALOG NUMBER: IT35-7625		
SHEET NAME: Sheet1	1 OF 1	
DRAWING DESCRIPTION: DRIVE TOOL FOR 3.5" O.D. PIPE & 1-3/4" RCS 7-5/8" BOLT CIRCLE		
DRAWN BY: DH	DATE: 03/12/20	APPROVED: DR