

NOTES:

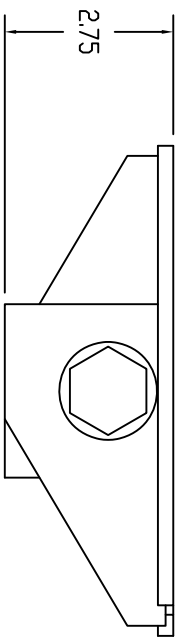
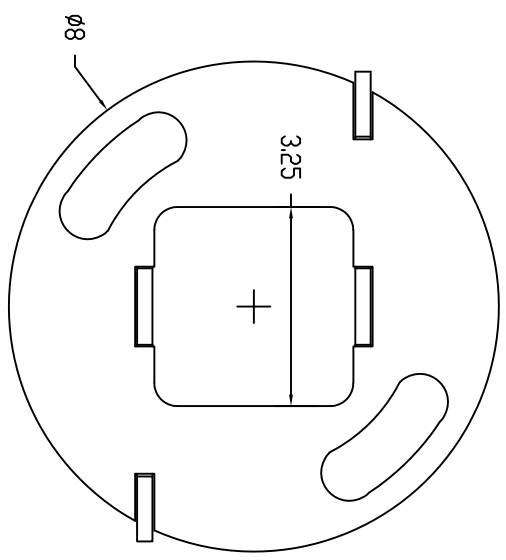
MATERIAL:
PLATE - STEEL, 36 KSI YIELD

WELDING REQUIREMENTS:
ALL WELDING TO BE PERFORMED BY WELDERS CERTIFIED
UNDER SECTION 5 OF AWS D1.1

FINISH:
NONE

DIMENSIONS: INCHES

HARDWARE:
HEX JAM NUT, 3/4 ϕ PER ASTM A563 (1 EA)



This drawing contains confidential information that is the property of MacLean Power, LLC. (MacLean). Use of MacLean's confidential information without MacLean's express written consent is strictly prohibited and may expose you to legal liability. If you believe that you received this material in error, please destroy it or return it to MacLean Power, LLC, Kingsley Park Five, 481 Munn Rd, Suite 300, Fort Mill, SC 29715, USA.

MacLean
POWER SYSTEMS
WWW.MACLEANPOWER.COM

CATALOG NUMBER:		MVP8P28	
SHEET NAME:	Sheet 1	1 OF	1
DRAWING DESCRIPTION:	MVP8P28 CUTTER PLATE		
DRAWN BY:	DH	DATE:	03/11/20
		APPROVED:	DR