

NOTES:

MATERIAL:
PLATE; STEEL, 36 KSI YIELD
PIPE SHAFT; STEEL, 50 KSI YIELD

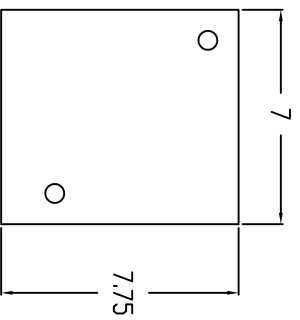
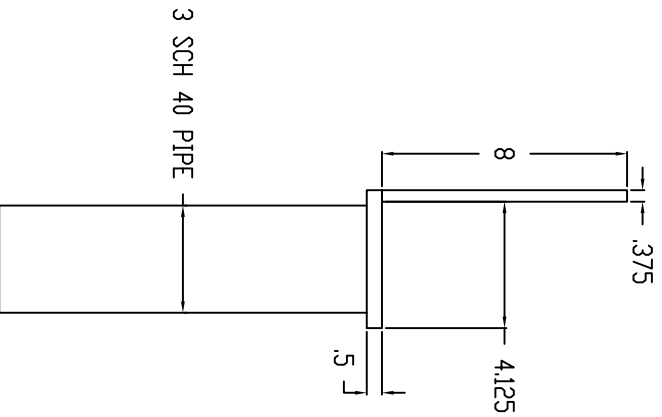
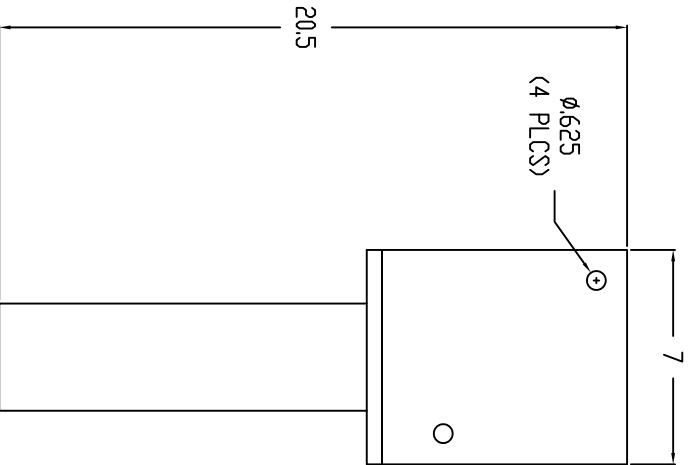
WELDING REQUIREMENTS:
ALL WELDING TO BE PERFORMED BY WELDERS
CERTIFIED UNDER SECTION 5 OF AWS D1.1

FINISH:
HOT DIP GALVANIZED PER ASTM A123
HOT DIP GALVANIZED PER ASTM A153 (HDW)

DIMENSIONS: INCHES

HARDWARE:
HEX HEAD BOLT, 1/2" PER ASTM A325 (2 EA)
HEX JAM NUT, 1/2" PER ASTM A563 (2 EA)

MECHANICAL RATING:
COMPRESSIVE STRENGTH RATING - 10,000 LBS



This drawing contains confidential information that is the property of MacLean Power, LLC. (MacLean). Use of MacLean's confidential information without MacLean's express written consent is strictly prohibited and may expose you to legal liability. If you believe that you received this material in error, please destroy it or return it to MacLean Power, LLC, Kingsley Park Five, 481 Munn Rd, Suite 300, Fort Mill, SC 29715, USA.

MacLean
POWER SYSTEMS
WWW.MACLEANPOWER.COM

CATALOG NUMBER:		N-6401-0136	
SHEET NAME:		Sheet 1	
DRAWING DESCRIPTION:		P28 BEAM SADDLE BRACKET	
DRAWN BY:	DATE:	APPROVED:	DR
DH	10/22/19		