

ISS	REVISED BY:	REVISION DATE	ECO #

NOTES:

\*ICC-ES EVALUATION REPORT ESR-3032 ACCREDITED PRODUCT\*

MATERIAL:

PLATE - STEEL, 36 KSI YIELD

COUPLER - STEEL, 40 KSI YIELD

WELDING REQUIREMENTS:

ALL WELDING TO BE PERFORMED BY WELDERS CERTIFIED UNDER SECTION 5 OF AWS D1.1

FINISH:

HOT DIP GALVANIZED PER ASTM A123

HOT DIP GALVANIZED PER ASTM A153 (HDW)

DIMENSIONS: INCHES

HARDWARE:

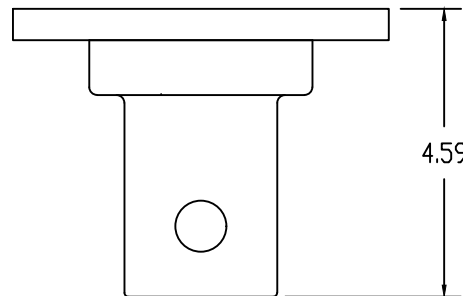
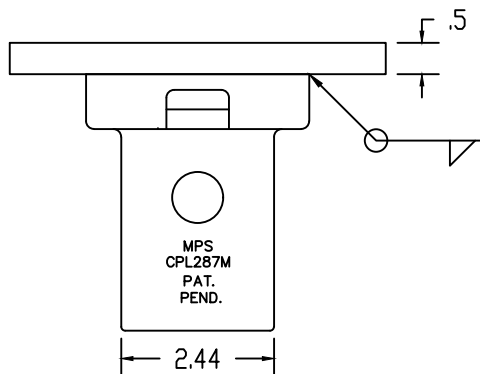
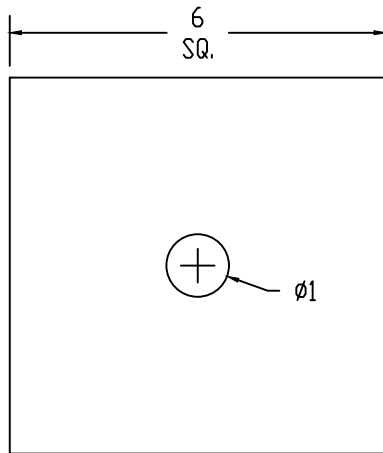
HEX HEAD BOLT, 3/4" PER ASTM A325 (1 EA)

HEX JAM NUT, 3/4" PER ASTM A563 (1 EA)

MECHANICAL RATING:

ULTIMATE COMPRESSION RATING - 51.2 KIPS

ULTIMATE TENSILE RATING - 51.2 KIPS



This drawing contains confidential information that is the property of MacLean Power, L.L.C. ("MacLean"). Use of MacLean's confidential information without MacLean's express written consent is strictly prohibited and may expose you to legal liability. If you believe that you received this material in error, please destroy it or return it to MacLean Power, L.L.C., Kingsley Park Five, 481 Munn Rd. Suite 300, Fort Mill, SC 29715, USA.

**MacLean**  
POWER SYSTEMS

WWW.MACLEANPOWER.COM

CATALOG NUMBER: NCB060604CP1G		
SHEET NAME: Sheet1	1 OF 1	
DRAWING DESCRIPTION: D6 NEW CONSTRUCTION BRACKET 6" X 6" X 1/2"		
DRAWN BY: DH	DATE: 03/11/20	APPROVED: DR