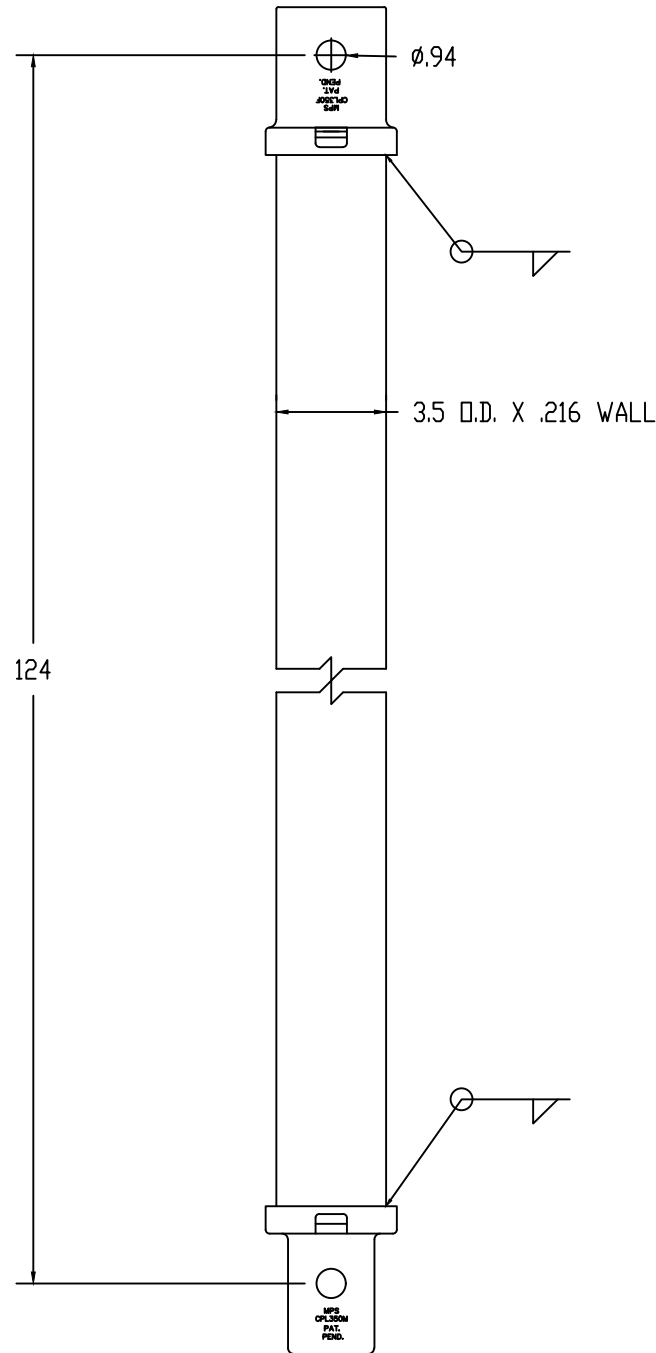


ISS	REVISED BY:	REVISION DATE	ECD #
-----	-------------	---------------	-------



NOTES:

\*ICC-ES EVALUATION REPORT ESR-3032 ACCREDITED PRODUCT\*

MATERIAL:

COUPLER - STEEL, 40 KSI YIELD  
 PIPE - SHAFT STEEL, 50 KSI YIELD

WELDING REQUIREMENTS:

ALL WELDING TO BE PERFORMED BY WELDERS CERTIFIED UNDER SECTION 5 OF AWS D1.1

FINISH:

HOT DIP GALVANIZED PER ASTM A123  
 HOT DIP GALVANIZED PER ASTM A153 (HDW)

DIMENSIONS: INCHES

HARDWARE:

HEX HEAD BOLT, 7/8" PER ASTM A325 (2 EA)  
 HEX JAM NUT, 7/8" PER ASTM A563 (2 EA)

MECHANICAL RATING:

TORQUE - 11,400 FT-LBS  
 Kt FACTOR - 7  
 ULTIMATE AXIAL CAPACITY - 100 KIPS

This drawing contains confidential information that is the property of MacLean Power, L.L.C. ("MacLean"). Use of MacLean's confidential information without MacLean's express written consent is strictly prohibited and may expose you to legal liability. If you believe that you received this material in error, please destroy it or return it to MacLean Power, L.L.C., Kingsley Park Five, 481 Munn Rd. Suite 300, Fort Mill, SC 29715, USA.



WWW.MACLEANPOWER.COM

CATALOG NUMBER:			P35E124
SHEET NAME:		Sheet1	1 OF 1
DRAWING DESCRIPTION:			PIPE EXTENSION P35 3-1/2" X 124"
DRAWN BY:	DATE:	APPRVD:	
DH	03/09/20	DR	