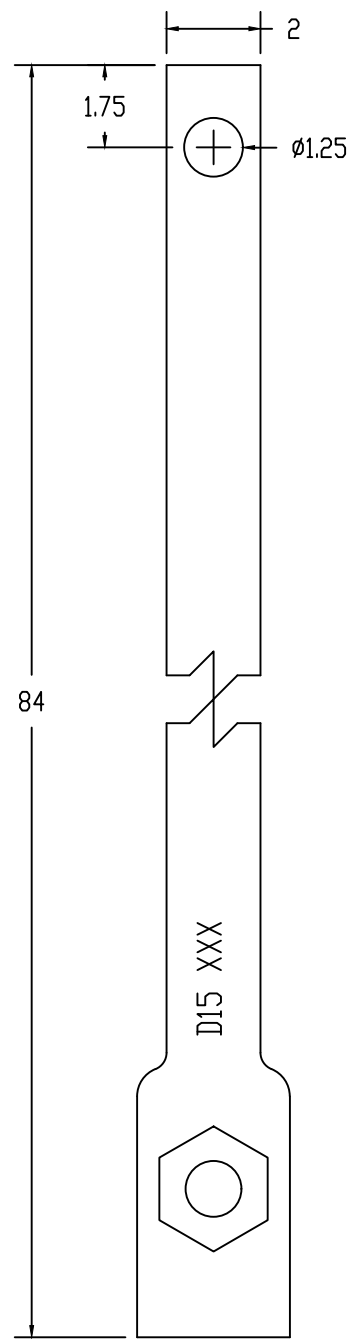


| ISS | REVISED BY: | REVISION DATE | ECO # |
|-----|-------------|---------------|-------|
| | | | |



NOTES:

MATERIAL:

RCS - SHAFT STEEL, 90 KSI YIELD

FINISH:

HOT DIP GALVANIZED PER ASTM A123

YELLOW ZINC DICHROMATE PER ASTM B633 (Gr. 8 HDW)

DIMENSIONS: INCHES

HARDWARE:

HEX HEAD BOLT, 1-1/8" PER SAE J429 (1 EA)

HEX JAM NUT, 1-1/8" PER ASTM A563 (1 EA)

REQUIREMENTS:

METAL MUST BE MELTED AND ALL PROCESSING PERFORMED IN THE USA. CERTIFICATION MUST BE INCLUDED THAT THE PART MEETS FHWA 'BUY AMERICA' REQUIREMENTS.

MECHANICAL RATING:

TORQUE - 15,000 FT-LBS

K_t FACTOR - 10

ULTIMATE AXIAL CAPACITY - 150 KIPS

This drawing contains confidential information that is the property of MacLean Power, L.L.C. ("MacLean"). Use of MacLean's confidential information without MacLean's express written consent is strictly prohibited and may expose you to legal liability. If you believe that you received this material in error, please destroy it or return it to MacLean Power, L.L.C., Kingsley Park Five, 481 Munn Rd. Suite 300, Fort Mill, SC 29715, USA.



WWW.MACLEANPOWER.COM

| | | | |
|----------------------|----------|-----------|---|
| CATALOG NUMBER: | | | S15E84-US |
| SHEET NAME: | | Sheet1 | 1 OF 1 |
| DRAWING DESCRIPTION: | | | EXTENSION BAR S15, BUY AMERICA 2" X 84" |
| DRAWN BY: | DATE: | APPROVED: | |
| DH | 12/02/20 | DR | |